

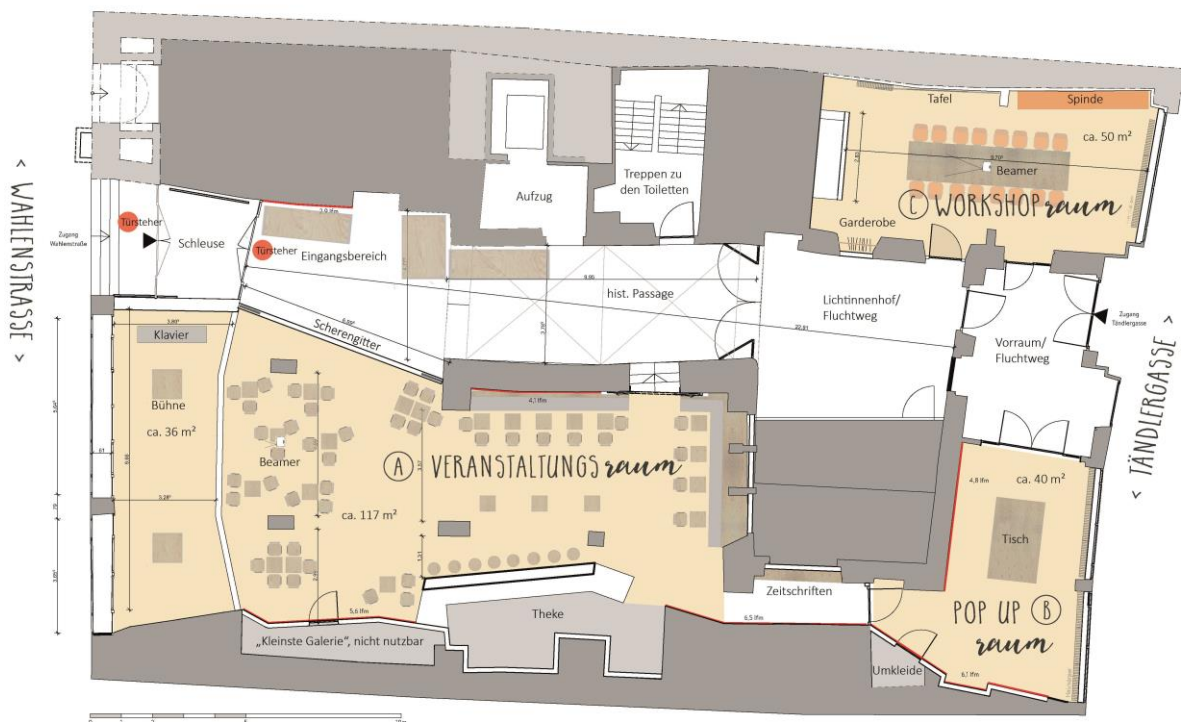
Tech Rider

Event Room

Contact Partner Martin Zumbil
Engineering Victor Malta
Mailing address D.-Martin-Luther-Str. 3; 93047 Regensburg
Telefon 0941/507-2857 /-2859
E-Mail kreativ@regensburg.de

Ground-plan

DEGGINGER



Equipment

- fixed stage (10 x 3 meters)
- dance carpet
- Blackout curtains
- Local gastronomy - HTW GmbH has the exclusive right to serve drinks at DEGGINGER. Contact via post@degginger-caffeebar.de.
- standard furniture with tables, chairs and barrels
- free accessible Bayern WiFi
- High-performance WiFi with restricted access via voucher on request

Seating options

- Standing reception with barrels
- Row seating for 60 people
- Table block with max. 20 school desks
- Seating groups with 11 small gastronomy tables and 2 bar tables

Technology

- 1 x iPad air for system control
- 1 x signal processor DSP unit for automatic operation (iPad control): BSS by Harman Blu-100 (permanently installed in the technical cabinet)
- 1 x Controller for light and sound for automatic operation (iPad control): AMX by Harman NX-1200 FG 2106-01 (permanently installed in the technical cabinet)
- 1 x multi-channel amplifier Ecler MPA 6-150R (permanently installed in the technical cabinet)

Light

- 2 x LED Fresnel lenses: Prolight Fresnel Fixture EVO90FTU incl. door panel (fixed)
- 2 x RGB-Spotlights: Prolight Super Slim LED PAR Luminar 18QPRO45 (fixed)
- 4 x RGBW LED Spotlights: Prolight StudioCobFC incl. door panel (fixed)
- 4 x RGBW LED battery light: Prolight Smartbat (mobile)
- 1 x light mixing console: ETC ColorSource 20 Console

Sound (additional charge required)

- 2 x speakers: Fohhn Topteile AT-221 (permanently installed beneath the ceiling)
- 2 x speakers: JBL Control 28-1-SW (permanently installed in the catering area)
- 1 x active bass: Fohhn XS-10
- 2 x active monitor speaker: LD Systems GT12A
- 4 x passive monitor speakers: 2 x X-Top XT-1; 2 x the box CL 108 Top MK II
- 1 x 16-channel analog mixer: Yamaha MG 16 XU
- 1 x Behringer X-32 Producer digital mixer (Firmware 4.02)
- 2 x stereo passive D.I. Box (2 channels)
- 4 x passive D.I. Box (1 channel)

Microphones & Accessories

- 3 x wireless microphones (automatic operation): Sennheiser ew165-B G3 & SKM 100 G4-S
- 1 x Sennheiser Headset HSP 4-EW-3 beige
- 2 x Rode Headset HS2P (1 x large; 1 x small)
- 7 x microphones Shure SM 57
- 4 x microphones Shure SM 58
- 1 x microphone Shure Beta 91 A
- 1 x microphone Shure Beta 52 A
- 1 x microphone Sennheiser E 602 II
- 1 x microphone Sennheiser E 604
- 2 x microphone Sennheiser E 906
- 2 x microphone Rode NT5
- 3 x microphone stands K&M 210/2 (tall)
- 4 x microphone stands K&M 210/9 (tall)
- 4 x microphone stands K&M 27105 (tall)
- 2 x microphone stands K&M 25905 (medium)
- 2 x microphone stands K&M 25950 (low)
- 1 x microphone stand K&M 25935 (low)
- 4 x microphone clamps Drum Holder K&M 24035
- 16 x microphone holder: Shure + several more of different brands

Audio Cables

- 1 x Behringer S32 Digitale Stagebox 32 Inputs, 16 Outputs
- 1 x Cat5e Cable 50m
- 4 x speaker cables: speakON, 2 x 15m; 2 x 10m
- 1 x PowerCon cable
- 31 x microphone cables: XLR female to XLR male , 5m – 15m
- 2 x 3,5mm jack to 2 x XLR, 2 x 3m
- 1 x 3,5mm jack to 2 x Cinch: 90cm
- 1 x Cinch to Cinch 3m
- 4 x 6,3mm jack to XLR female, 5m
- 4 x 6,3mm jack to XLR male, 5m
- 6 x 6,3mm jack to 6,3mm jack, 2 x 3m; 4 x 6m
- 2 x SpeakOn Extension (Spookys)
- 3 x XLR female to jack adapter
- 4 x XLR male to XLR male adapter
- 4 x XLR female to XLR female adapter
- 2 x XLR male to Cinch adapter
- 2 x 3,5mm jack to 6,3mm jack Headphone adapter

Instruments & Amplifier

- Drums (Bebop kit: kick drum, snare drum, floor tom, 2x tom, 2x cymbals, hihat)
- 1 x guitar amplifier Hughes & Kettner Statesman Quad EL84

Beamer (additional charge required)

- Vivitek DLP Projector (D5000 series)
 - Zoom standard lens / projection ratio 1.54-1.93:1
 - Native resolution WUXGA (1920x1200)
 - Brightness 5000 ANSI Lumen
 - Contrast ratio 2.000:1
- motorized screen (fixed): WS Spalluto Design Home 4:3, 290cm x 218cm
- mobile screen 16:9; 200cm x 300cm

Video Cables

- 1 x HDMI 4m
- 2 x HDMI 5m
- 4 x Adapter mini Displayport to HDMI
- 1 x VGA Cable 1,5m; 10m

NOTE: Laptop / player should be brought by the organizer!

Power

- 1 x Art Lighting high voltage power distribution box 32A > 6x Schuko
- 3 x cable drum 4-f. Schuko 50m
- 1 x socket cube hanging from the ceiling in front of the stage
- 2 x extension cables 15m
- 2 x extension cables 10m
- 5 x multiple socket 6-parted

ASSEMBLY INSTRUCTIONS

The control of sound, light and video is standard via iPad. The sound control enables the use of wireless and wired microphones as well as the control of audio signals from e.g. laptop, telephone, MP3 player. Lighting control is possible via iPad or the light mixing station. Also the control of the beamer is via iPad. Sound can alternatively be controlled via the mixing console.

Mixer

Mixer „Stereo OUT“ > XLR cable > socket on stage rear panel „Mischpult“

Nearfill: Mixer „AUX 1/2“ or „Group“ > Jack to XLR cable > socket on stage rear panel „Monitor 1/2 IN“

Monitor speakers

socket on stage rear panel „Monitor 1/2 OUT“ > speakON cable > Monitor speaker

wired microphones SHURE

Microphone > XLR Cable > socket on stage rear panel „Bühne 1/2“

Laptop / Telefone / MP3 Player

Laptop / Telefone / MP3 Player > 3,5mm jack to 2 x Cinch Cable > mixer line 13/14 or 15/16

Laptop / Telefone / MP3 Player > 3,5mm jack to 2 x XLR Cable > socket on stage rear panel „Bühne 1/2“ or mixer

Beamer

Laptop > HDMI Cable (if necessary with adapter) > socket on stage rear panel „Atlona“ (Attention: for HDMI Input lights must light blue)

Laptop > VGA Cable > socket on stage rear panel „Atlona“ (Attention: for VGA Input lights must light red)

BASICS FROM THE USE AGREEMENT (excerpt etc.)

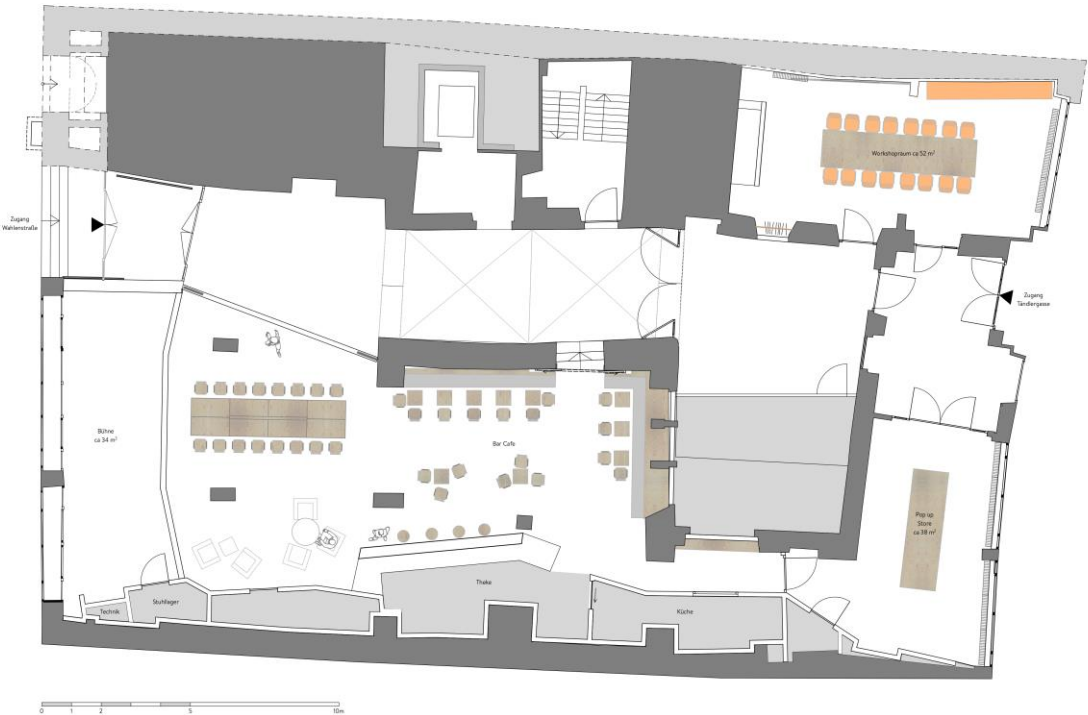
- The event room is limited to a maximum of 170 persons
- The user must ensure that the external doors are closed during the event in order to minimise the volume for the neighbors
- The premises are to be left clean.
- No third-party property can be stored at DEGGINGER before or after events.
- The user has to take care of sufficient liability insurance coverage.
- Smoking on Tändlergasse is prohibited in the evening.
- DEGGINGER excludes the disposal of waste, especially packaging material and cardboard boxes.

Other important informations

- Attachment of exhibition objects to the sea pine wall by nailing and taping is possible.
- The only way to attach exhibition objects to the historical stone walls is by taping them on. Attention: Adhesive tapes do not hold well on the wall.
- Attachment of exhibition objects to the historical stone walls by nailing only in individual cases and after consultation permitted. Nails must not be driven deeper than 0,5cm in order not to endanger the historical building fabric.
- The walls may only be painted with silicate paint.

SEATING ARRANGEMENTS Gastronomy + Table Board

Die gesamte Planung unterliegt dem Urheberrecht und darf nicht ohne Zustimmung des Planers vervielfältigt und/oder weitergegeben werden.



A1529 - Das Degginger
Wahlenstraße 17
93047 Regensburg

PURE
GROUP

SCALE: 1:100
DATE:
SUBJECT: Variante 1

SEATING ARRANGEMENTS Row seating + Gastronomy

Die gesamte Planung unterliegt dem Urheberrecht und darf nicht ohne Zustimmung des Planers vervielfältigt und/oder weitergegeben werden.



A1529 - Das Degginger
Wahlenstraße 17
93047 Regensburg

PURE
GROUP

SCALE: 1:100
DATE:
SUBJECT: Variante 2

SEATING ARRANGEMENTS Seating Groups

Die gesamte Planung unterliegt dem Urheberrecht und darf nicht ohne Zustimmung des Planers vervielfältigt und/oder weitergegeben werden.



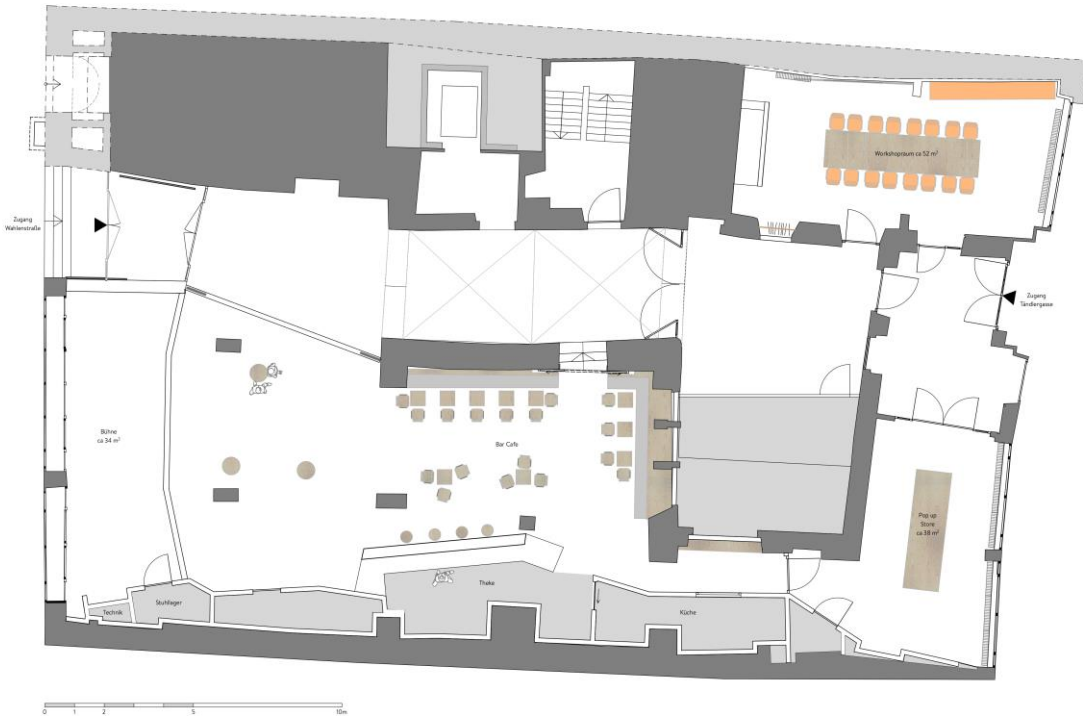
A1529 - DasDegginger
Wahlenstraße 17
93047 Regensburg

PURE
GRUPPE

SEITE 1:100
DATUM
PROJEKT Variante 5

SEATING ARRANGEMENTS Concert with bar tables

Die gesamte Planung unterliegt dem Urheberrecht und darf nicht ohne Zustimmung des Planers vervielfältigt und/oder weitergegeben werden.



A1529 - DasDegginger
Wahlenstraße 17
93047 Regensburg

PURE
GRUPPE

SEITE 1:100
DATUM
PROJEKT Variante 4